

## STANDARD TREATMENT WORKFLOW (STW)

### Approach to Hyponatremia

Anil Bhansali<sup>1</sup>, Eesh Bhatia<sup>2</sup>, B Ganpathi<sup>3</sup>, Maj Gen Narendra Kotwal<sup>4</sup>, Rajesh Rajput<sup>5</sup>,  
Ravinder Goswami<sup>6</sup>, Subhankar Choudhary<sup>7</sup>, V Mohan<sup>8</sup>

<sup>1</sup>Postgraduate Institute of Medical Education and Research, Chandigarh; <sup>2</sup>Sanjay Gandhi Post Graduate Institute of Medical Sciences, Lucknow; <sup>3</sup>St John's Medical College Hospital, Bengaluru; <sup>4</sup>Army Hospital Research and Referral, New Delhi; <sup>5</sup>Pandit Bhagwat Dayal Sharma Post Graduate Institute of Medical Sciences, Rohtak; <sup>6</sup>All India Institute of Medical Sciences, New Delhi; <sup>7</sup>Institute of Post-Graduate Medical Education and Research, Kolkata; <sup>8</sup>Dr. Mohan's Diabetes Specialities Centre, Chennai

#### CORRESPONDING AUTHOR

Dr. Anil Bhansali, Department of Endocrinology, Postgraduate Institute of Medical Education and Research, Chandigarh

Email: [anilbhansali\\_endocrine@rediffmail.com](mailto:anilbhansali_endocrine@rediffmail.com)

#### CITATION

Bhansali A, Bhatia E, Ganpathi B, Kotwal N, Rajput R, Goswami R, Choudhary S, Mohan V. Approach to Hyponatremia. Journal of the Epidemiology Foundation of India. 2024;2(1Suppl):S105-S106.

DOI: <https://doi.org/10.56450/JEFI.2024.v2i1Suppl.053>

This work is licensed under a Creative Commons Attribution 4.0 International License.

©The Author(s). 2024 Open Access

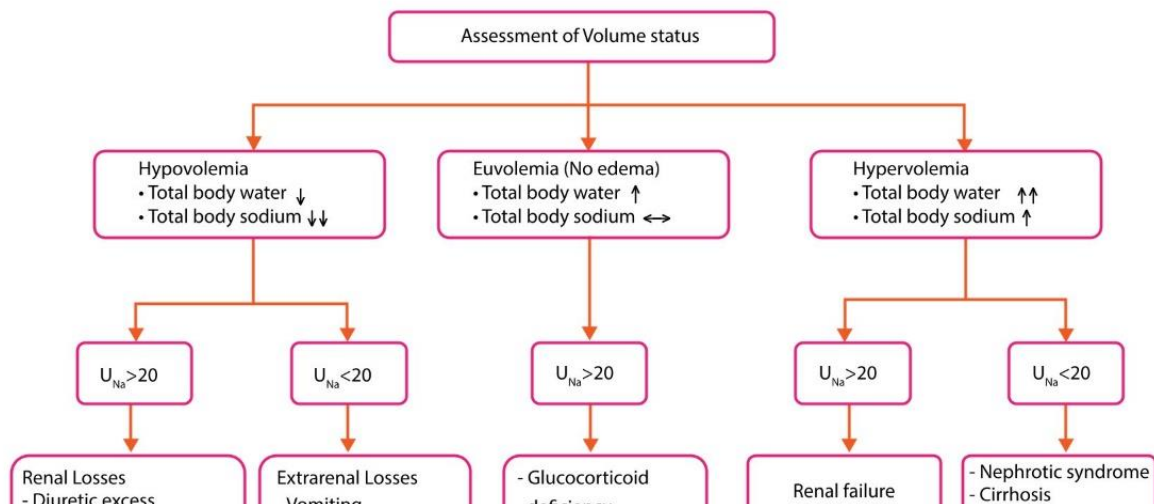
#### DISCLAIMER

This article/STW, was originally published by Indian Council of Medical Research (ICMR) under Standard Treatment Workflow. The reprinting of this article in Journal of the Epidemiology Foundation of India (JEFI) is done with the permission of ICMR. The content of this article is presented as it was published, with no modifications or alterations. The views and opinions expressed in the article are those of the authors and do not necessarily reflect the official policy or position of JEFI or its editorial board. This initiative of JEFI to reprint STW is to disseminate these workflows among Health Care Professionals for wider adoption and guiding path for Patient Care.

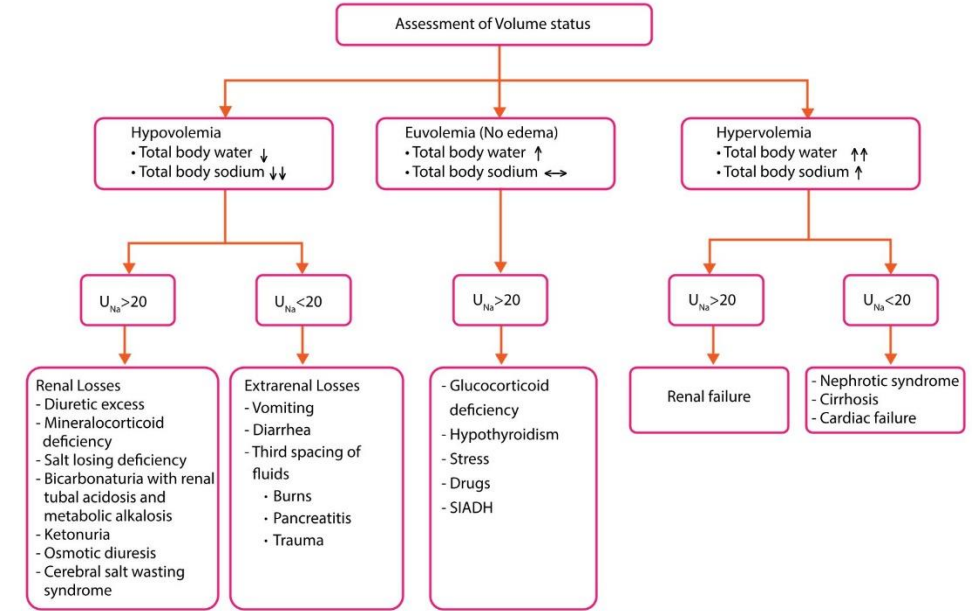
JEFI/AMC



### Standard Treatment Workflow (STW) APPROACH TO HYPONATREMIA ICD-10-E87.1

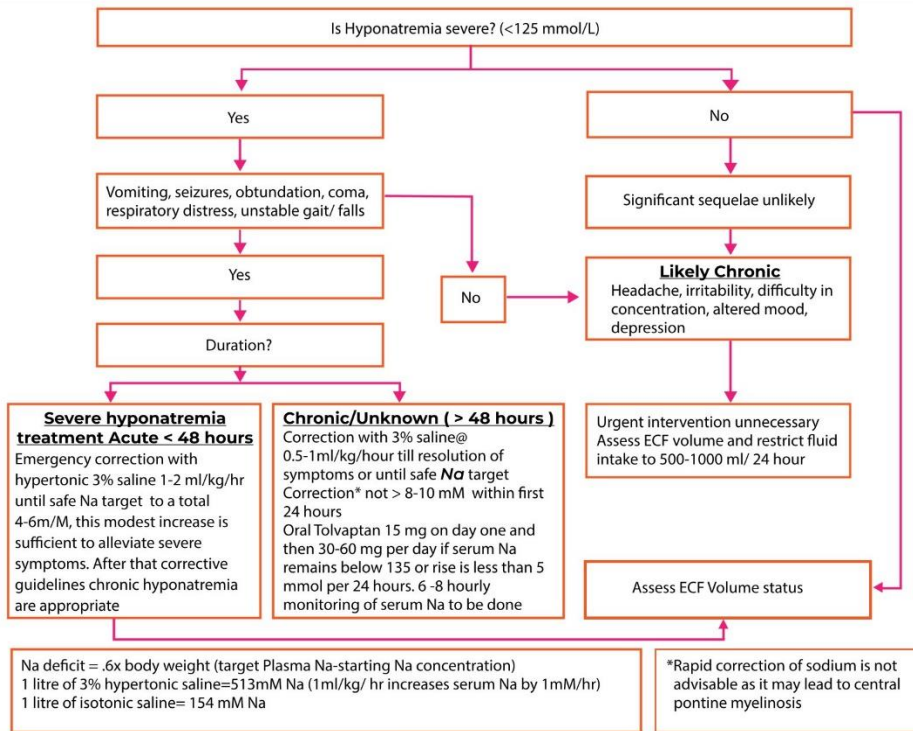


**Standard Treatment Workflow (STW)**  
**APPROACH TO HYPONATREMIA**  
**ICD-10-E87.1**



**TREATMENT**

Intravenous hydration with isotonic normal saline in hypovolemic hyponatremia      Treatment of underlying disease in hypervolemic hyponatremia



**ABBREVIATIONS**

ECF: Extracellular fluid  
Na: Sodium

SIADH: Syndrome of inappropriate antidiuretic hormone secretion  
U<sub>Na</sub>: Urinary sodium

KEEP A HIGH THRESHOLD FOR INVASIVE PROCEDURES

This STW has been prepared by national experts of India with feasibility considerations for various levels of healthcare system in the country. These broad guidelines are advisory, and are based on expert opinions and available scientific evidence. There may be variations in the management of an individual patient based on his/her specific condition, as decided by the treating physician. There will be no indemnity for direct or indirect consequences. Kindly visit the website of DHR for more information: [stw.icmr.org.in](http://stw.icmr.org.in) for more information. ©Department of Health Research, Ministry of Health & Family Welfare, Government of India.