

STANDARD TREATMENT WORKFLOW (STW)

Dilatation and Curettage (D&C)

Reva Tripathi¹, Vinita Das², Manju Puri³, Radhika⁴, Neelam Aggarwal⁵, Asmita Rathore⁶, Aruna Kekre⁷, Dasari Papa⁸, Usha Rani⁹, Manika Khanna¹⁰, Neerja Bhatla¹¹, Seema Saran¹²

¹Maulana Azad Medical College (MAMC), New Delhi; ²King George's Medical College, Lucknow; ³Lady Hardinge Medical College, New Delhi; ⁴University College of Medical Sciences, New Delhi; ⁵Postgraduate Institute of Medical Education and Research, Chandigarh; ⁶Maulana Azad Medical College (MAMC), New Delhi; ⁷Christian Medical College, Vellore; ⁸Jawaharlal Institute of Postgraduate Medical Education & Research, Puducherry; ⁹Institute of Obstetrics and Gynaecology, Chennai; ¹⁰NRIGS; ¹¹All India Institute Of Medical Science, New Delhi; ¹²Government Medical College Budaun

CORRESPONDING AUTHOR

Dr. Reva Tripathi, Department of OBS/GYN, Maulana Azad Medical College (MAMC), New Delhi.

Email: revatripathi@gmail.com

CITATION

Tripathi R, Das V, Puri M, Radhika, Aggarwal N, Rathore A, Kekre A, Papa D, Rani U, Khanna M, Bhatla N, Saran S. Dilatation and Curettage (D&C). Journal of the Epidemiology Foundation of India.

2024;2(1Suppl):S37-S38. DOI: <https://doi.org/10.56450/JEFI.2024.v2i1Suppl.019>

This work is licensed under a Creative Commons Attribution 4.0 International License.

©The Author(s). 2024 Open Access

DISCLAIMER

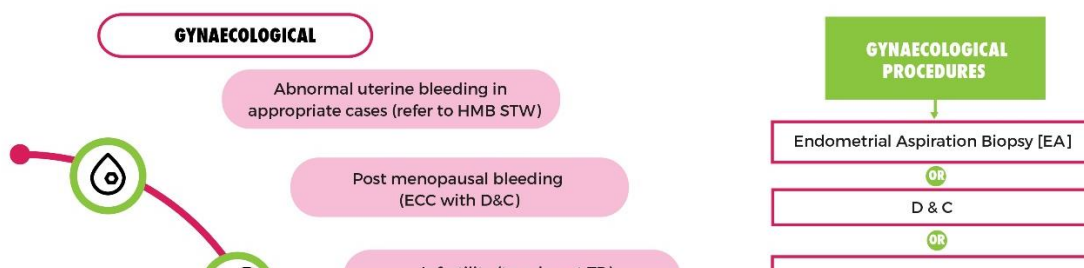
This article/STW, was originally published by Indian Council of Medical Research (ICMR) under Standard Treatment Workflow. The reprinting of this article in Journal of the Epidemiology Foundation of India (JEFI) is done with the permission of ICMR. The content of this article is presented as it was published, with no modifications or alterations. The views and opinions expressed in the article are those of the authors and do not necessarily reflect the official policy or position of JEFI or its editorial board. This initiative of JEFI to reprint STW is to disseminate these workflows among Health Care Professionals for wider adoption and guiding path for Patient Care.

October/2019



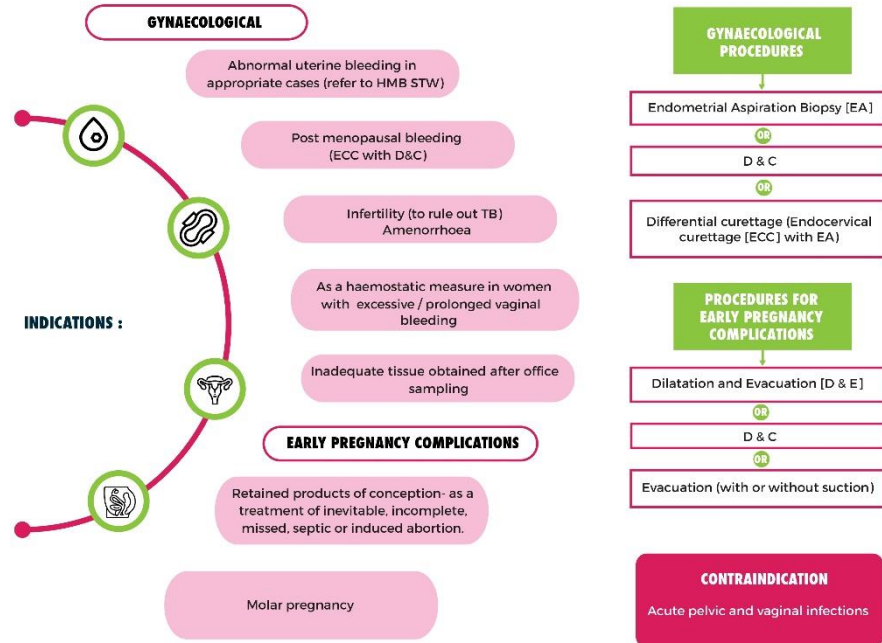
Standard Treatment Workflow (STW) for DILATATION AND CURETTAGE (D&C)

- Mostly done for gynaecological indications, but may also be considered in early pregnancy complications
- Though office endometrial biopsy using either thin flexible or Karman cannula or office hysteroscopy has obviated the need for traditional D&C in gynaecological cases, it still has a place when other modalities are not available or do not yield adequate tissue



Standard Treatment Workflow (STW) for DILATATION AND CURETTAGE (D&C)

- Mostly done for gynaecological indications, but may also be considered in early pregnancy complications
- Though office endometrial biopsy using either thin flexible or Karman cannula or office hysteroscopy has obviated the need for traditional D&C in gynaecological cases, it still has a place when other modalities are not available or do not yield adequate tissue



WHERE CAN IT BE PERFORMED?

- In secondary or tertiary healthcare centres preferably where facilities for anaesthesia and operation theatre are available to deal with procedure related complications, if any.
- Endometrial aspiration biopsy is usually done as an outpatient procedure in non pregnant cases.

ALL TISSUE REMOVED MUST BE SENT FOR HISTOPATHOLOGICAL EXAMINATION

PRE- OPERATIVE REQUISITES

- Presence of a valid indication
- General medical fitness & no contraindication
- A written informed consent

ANESTHESIA (ANY OF THE FOLLOWING)

- General anesthesia
- Regional anesthesia
- Paracervical block with 1% xylocaine
- IV sedation
- IM/ oral analgesia

Strict asepsis to be maintained. Antibiotics to be used judiciously and decided as per need of individual case.

POST PROCEDURE CARE & FOLLOW UP

- Observe the patient for minimum two hours after the procedure for haemorrhage or any other symptoms or signs of complications prior to discharge
- Patient can be discharged as soon as she is comfortable and alert.
- Most common side effect is abdominal cramps which can be managed by oral analgesics.
- **Warning signals to report back** to be explained at the time of discharge - severe pain, bleeding, foul smelling discharge or fever.
- Follow up is done after a week with histopathology report for further advice.

COMPLICATIONS

- Excessive bleeding
- Cervical laceration
- Perforation of the uterus
- Injury to bowel and bladder
- Pelvic infection
- Post-operative intra uterine adhesions

DO'S

- Evacuation of urinary bladder before procedure.
- Safety checklist
- Dorsal/lithotomy position
- Bimanual pelvic examination prior to the procedure
- Sounding to measure uterocervical length ONLY in non pregnant women.
- Sample to be sent for histopathology and microbiology (where indicated)
- **REFER in case of a complication**

DONT'S

- Over abduction of legs
- No sounding in cases of pregnant uterus.
- No forceful insertion of any instrument
- Abandon the procedure in case of suspected perforation and refer to higher centre.
- Insertion of the dilator should be just beyond the internal os and NOT till the fundus

D&C is a blind procedure and may miss the pathology in some cases. In cases where focal pathology is suspected, tissue should be obtained under hysteroscopic visualization.

COUNSELLING IS AN IMPORTANT ADJUNCT TO MANAGEMENT

KEEP A HIGH THRESHOLD FOR INVASIVE PROCEDURES

This STW has been prepared by national experts of India with feasibility considerations for various levels of healthcare system in the country. These broad guidelines are advisory, and are based on expert opinions and available scientific evidence. There may be variations in the management of an individual patient based on his/her specific condition, as decided by the treating physician. There will be no indemnity for direct or indirect consequences. Kindly visit our web portal (stw.icmr.org.in) for more information.
© Indian Council of Medical Research and Department of Health Research, Ministry of Health & Family Welfare, Government of India.