

# STANDARD TREATMENT WORKFLOW (STW)

## Chronic Rhinosinusitis

Alok Thakar<sup>1</sup>, Anupam Mishra<sup>2</sup>, A Ramesh<sup>3</sup>, Harpreet Kochar<sup>4</sup>, Col B. K. Prasad<sup>5</sup>, Anuja Bhargava<sup>6</sup>, Prem Sagar<sup>7</sup>

<sup>1</sup>All India Institute of Medical Sciences, Delhi, <sup>2</sup>King George's Medical, Lucknow, <sup>3</sup>St John's Medical College, Bangalore, <sup>4</sup>Private Practice, Greater Noida, <sup>5</sup>Command Hospital, Lucknow, <sup>6</sup>Ira Medical College, Lucknow, <sup>7</sup>All India Institute of Medical Sciences Delhi

### CORRESPONDING AUTHOR

Dr Alok Thakar, All India Institute of Medical Sciences, Delhi

Email: [drathakar@gmail.com](mailto:drathakar@gmail.com)

### CITATION

Thakar A, Mishra A, Ramesh A, Kochar H, Prasad BK, Bhargava A, Sagar P. Chronic Rhinosinusitis.

Journal of the Epidemiology Foundation of India. 2024;2(1Suppl):S155-S156.

DOI: <https://doi.org/10.56450/JEFI.2024.v2i1Suppl.078>

This work is licensed under a Creative Commons Attribution 4.0 International License.

©The Author(s). 2024 Open Access

### DISCLAIMER

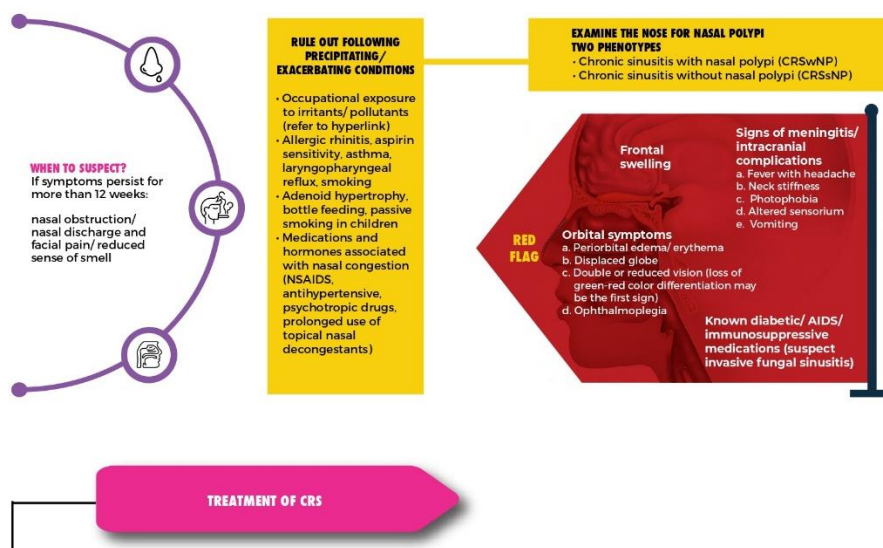
This article/STW, was originally published by Indian Council of Medical Research (ICMR) under Standard Treatment Workflow. The reprinting of this article in Journal of the Epidemiology Foundation of India (JEFI) is done with the permission of ICMR. The content of this article is presented as it was published, with no modifications or alterations. The views and opinions expressed in the article are those of the authors and do not necessarily reflect the official policy or position of JEFI or its editorial board. This initiative of JEFI to reprint STW is to disseminate these workflows among Health Care Professionals for wider adoption and guiding path for Patient Care.

JEFI/JAEPH

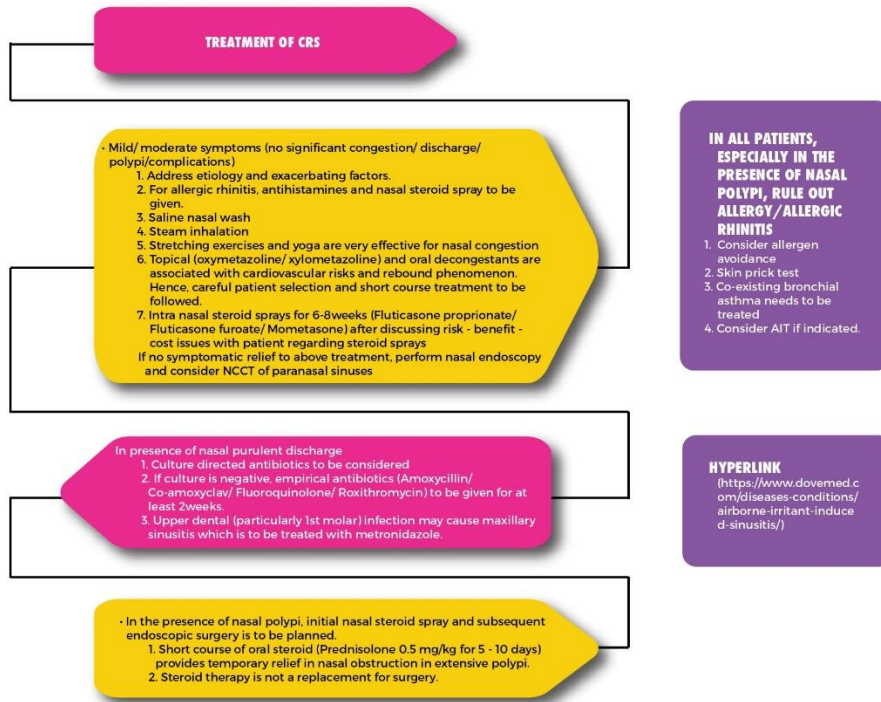
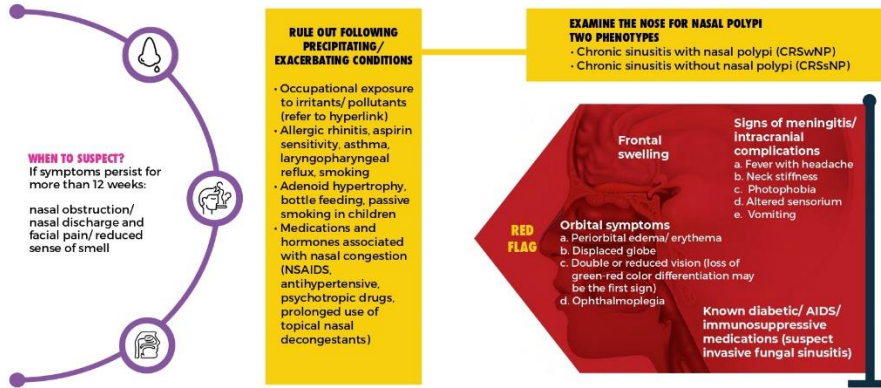


## Standard Treatment Workflow (STW) for the Management of CHRONIC RHINOSINUSITIS

ICD 10 - J32.9



**Standard Treatment Workflow (STW) for the Management of  
CHRONIC RHINOSINUSITIS  
ICD 10 - J32.9**



- 1 Identification of precipitating or exacerbating factors is the key to successful treatment outcome.
- 2 Always rule out DNS/ nasal polypi in CRS, as surgical treatment may be necessary for complete resolution of symptoms.
- 3 Ensure adherence to nasal saline washes / regular physical activity / medications.
- 4 Educate patients on correct technique of using steroid nasal sprays and nasal irrigation.
- 5 Prolonged use of topical nasal decongestant beyond 5-7 days may cause rebound congestion and rhinitis medicamentosa and to be strongly discouraged.

**ABBREVIATIONS**

<b>CT:</b> Computerized Tomogram	<b>AIT:</b> Allergen Immuno Therapy	<b>DNS:</b> Deviated Nasal Septum
----------------------------------	-------------------------------------	-----------------------------------

**REFERENCES**

- \* Fokkens W, Lund V, Mullol J, et al. EPOS 2012: European Position Paper on Rhinosinusitis and Nasal Polyps 2012. *Rhinol* 2012;50(Suppl 23):1-298.
- \* Cain RB, Lal D. Update on the management of chronic rhinosinusitis. *Infect Drug Resist*. 2013;6:1-14.
- \* Ali-See KI, MacKenzie JM, Ali-See KW. Management of chronic rhinosinusitis. *BMJ*. 2012;345:e7054.
- \* Slovick A, Long J, Hopkins C. Updates in the management of chronic rhinosinusitis. *Clin Pract*. 2014;11(6):649-63. 10.2217/cpr.14.71

This STW has been prepared by national experts of India with feasibility considerations for various levels of healthcare system in the country. These broad guidelines are advisory, and are based on expert opinions and available scientific evidence. There may be variations in the management of an individual patient based on his/her specific condition, as decided by the treating physician. There will be no indemnity for direct or indirect consequences. Kindly visit our web portal ([stw.icmr.org.in](http://stw.icmr.org.in)) for more information.  
© Indian Council of Medical Research and Department of Health Research, Ministry of Health & Family Welfare, Government of India.